

Challenges in Prostate Cancer: Why We Are 15 Years Behind Breast Cancer

~ David C. Beyer, MD


Challenges in Prostate Cancer: Why Are We 15 Years Behind Breast Cancer

David C. Beyer, MD, FACP, FACRO, FASTRO
 Arizona Oncology Services
 Phoenix, Arizona

Breast vs Prostate

- Cancer statistics and natural history
- Advocacy
- Research
- Treatment of primary
- Adjuvant hormonal treatments
- Adjuvant chemotherapy treatments

New Cancer Cases

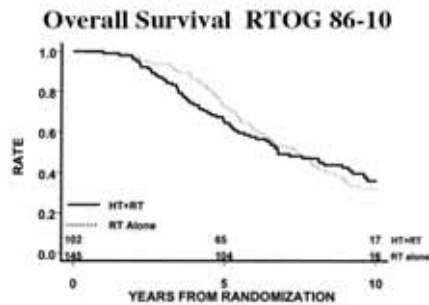
Prostate	234,460	33%		Breast	212,920	31%
Lung	92,700	13%		Lung	81,770	12%
Colon & Rectum	72,800	10%		Colon & Rectum	75,810	11%
Bladder	44,690	6%		Uterine	41,200	6%
Melanoma	34,260	5%		Non-Hodgkin Lymphoma	28,190	4%
All Sites	720,280			All Sites	679,510	

Jemal, A. et al. CA Cancer J Clin 2006;56:106-130

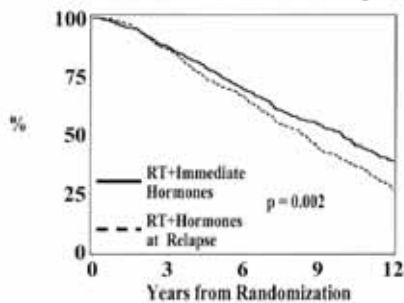
Adjuvant Tamoxifen

- Early Breast Cancer Trialists Collaborative Group (EBCTCG)
- 5 years adjuvant therapy
- In receptor positive patients:
 - Odds of recurrence ↓ 47%
 - Odds of death ↓ 26%

Does Early HT Compromise Late Salvage HT?



RTOG 85-31 Reduction in Mortality



Hormones for Prostate Cancer: Short vs Long Term

- RTOG 9202 (+)
 - Locally advanced PSA<150
 - T2 and >25cc, T3, T4
 - RT + Goserelin / Eulexin 2mos. prior and during
 - +/- 2 years Goserelin

Are Hormones Beneficial in the Era of Dose Escalation?

- **RTOG 0815**
- **Intermediate risk patients**
- **Dose escalation**
 - XRT 79.2 Gy (IGRT ok)
 - XRT 45 Gy + HDR 21 Gy / 2 Fx's
 - XRT 45 Gy + ¹²⁵I 110 Gy (or ¹⁰³Pd 100Gy)
- **+/- 6 months TAB**
- **1520 patients**

<http://rtog.org/members/protocols/0815/0815.pdf>

Available Hormone Options

- Tamoxifen
- Fareston
- Arimidex
- Aromasin
- Femara
- Megestrol
- Halotestin
- Bicalutamide
- Leuprolide
- Surgical castration
- DES
- Bicalutamide
- Flutamide
- Nilandrone
- Leuprolide
- Goserelin
- Degarelix
- Surgical castration

<http://www.webmd.com/breast-cancer/hormone-therapy-overview>

Hormone Induced Flair

- Worsening pain, bone scan, labs, etc.
- 2-21 days
- 3-20%

Plotkin, et al, JAMA, 1978; 240:2644

Treatment Issues

- Breast
- ER/PR receptor assay
- Level I evidence
- Hormones
- AI's
- Prostate
- Presumed sensitivity
- Level I evidence
- LHRH / Antiandrogen
